



**SOCIETY OF RESEARCH
SOFTWARE ENGINEERING**

[linktr.ee/
ResearchSoftEng](https://linktr.ee/ResearchSoftEng)

Society of Research Software Engineering AGM 2025

David Beavan, President

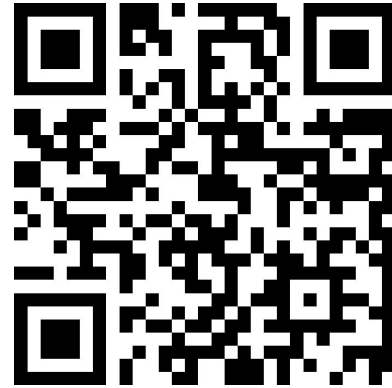
Agenda

- Introduction [5m]
- Trustee reports and updates [5m each, 30m total]
 - President's Report
 - Special Interest Groups
 - EDIA & Role Diversity
 - Conference & Events
 - Membership
 - Treasurer's Report
- Q&A via Sli.do - slido.com with code **#agm25** [15m]
- Election results and close [10m]

Introduction

Purpose:

- ▶ **To vote on resolutions** as required by our constitution.
- ▶ **For trustees to update the Society's members** on what we have been doing this year to develop the Society and further our shared aims.
- ▶ **For members to have the opportunity to ask questions and raise topics** for future consideration.



Sli.do

What is the Society of RSE?

We are a UK Charity (1182455) and aim to support RSEs in the UK, provide a home for people who don't have a national organisation and help incubate other organisations internationally.

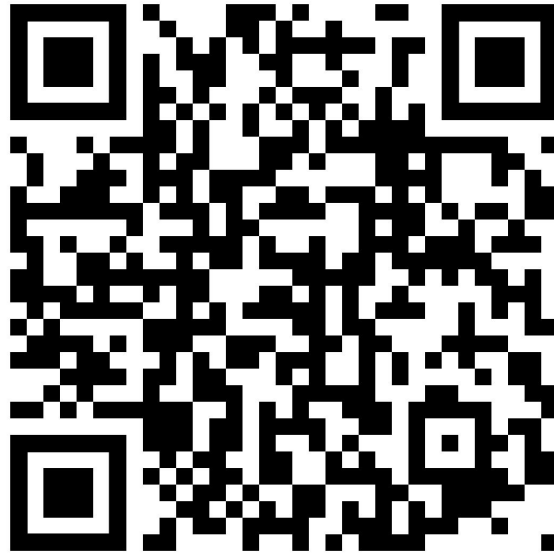
Our Charitable objectives are:

- to advance education particularly but not exclusively amongst research software engineers; and/or
- to promote and advance research particularly but not exclusively in all aspects of research that relies on software engineering and to publish the useful results.



Trustees Annual Report

society-rse.org/links/socrse-report-accounts-25



President's Report

David Beavan

What is the Society of RSE?

A charitable members organisation

Charity Number: 1182455

We provide:

- ▶ A conference
- ▶ Financial support
- ▶ **A community and voice for RSEs**



Highlights over the last year

- ▶ We are six 🎂 a charity since 2019, building on roots going back to 2013
- ▶ New President, after Matt hit his max term
- ▶ RSECon remains the flagship event
- ▶ Many new special interest groups
- ▶ We continue to support members via funding, mentorship, and community
- ▶ We rely heavily on volunteers and the 50% FTE contribution from the Software Sustainability Institute



The Current Trustees

Finishing Term/Retiring



Mary
Chester-Kadwell



Fliss Guest



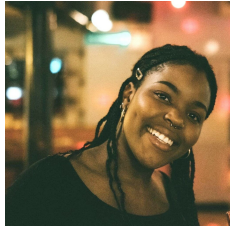
Marion Weinzierl



David Beavan



Gillian Sinclair



Abie
Alexander-Ikwue



Godwin Yeboah



Kirsty Pringle



Martin O'Reilly

Continuing



Stef Piatek



Lyndsey Ballantyne



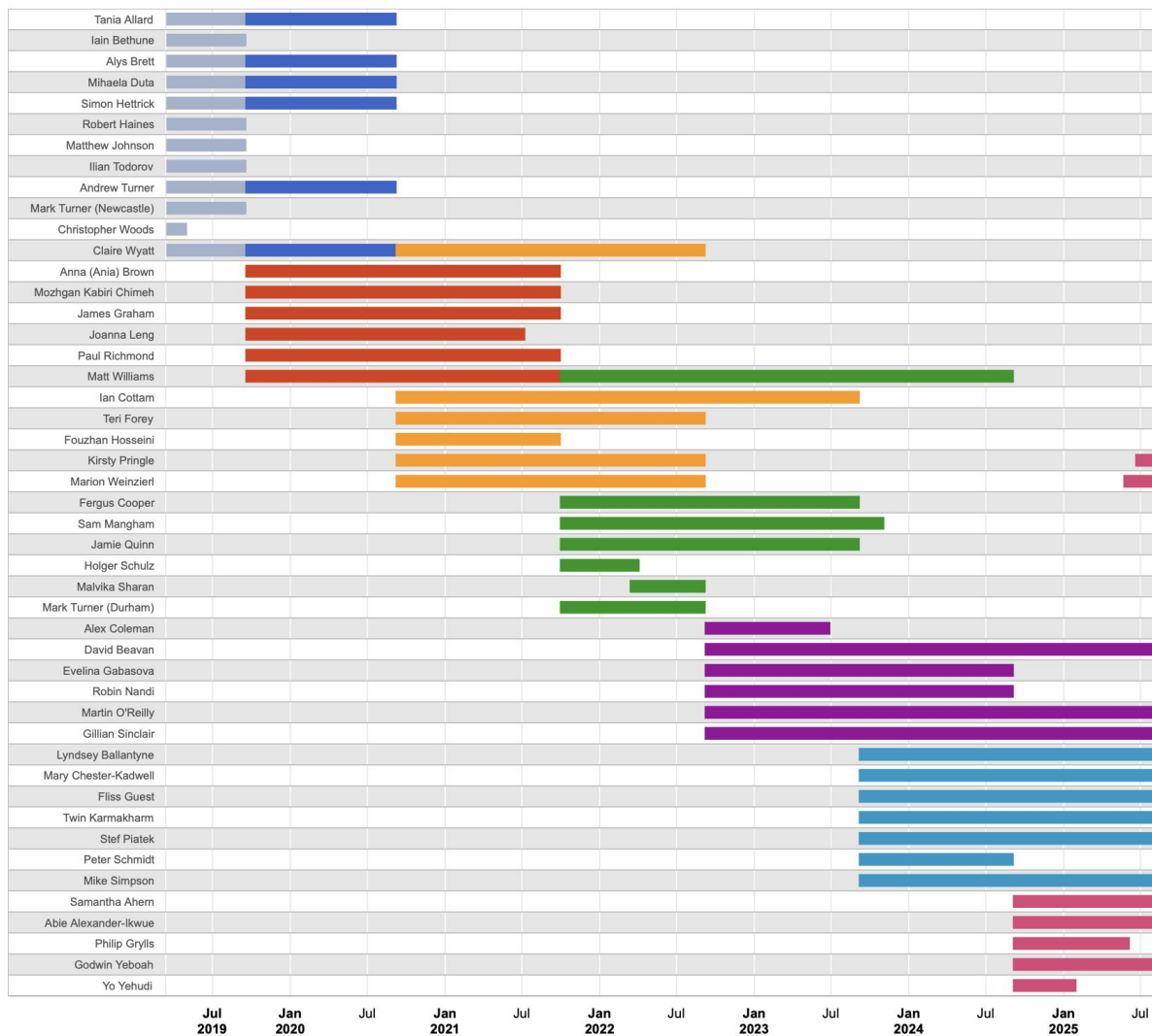
Samantha Ahern



Twin Karmakharm



Mike Simpson



Trustees Standing Down

Leavers since 2024 AGM



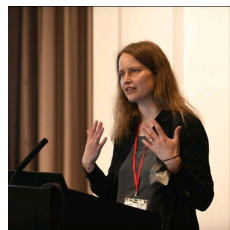
Philip Grylls



Mary
Chester-Kadwell



Fliss Guest



Marion Weinzierl



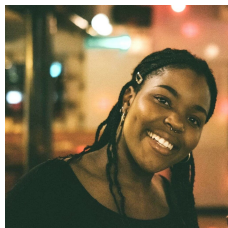
David Beavan



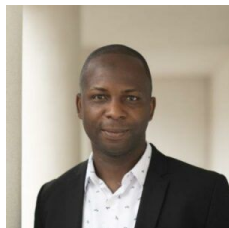
Gillian Sinclair



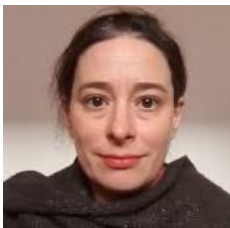
Yo Yehudi



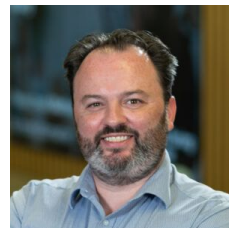
Abie
Alexander-Ikwue



Godwin Yeboah



Kirsty Pringle



Martin O'Reilly

Gratitude to Software Sustainability Institute (SSI)

- ▶ Voluntary donation from SSI to SocRSE
- ▶ Currently equal to 50% full-time
- ▶ Lyndsey Ballantyne handing over to Michael Donnay

- ▶ Conference Logistics Chair
- ▶ Leaders Network Steering Group member
- ▶ SIG Coordinator
- ▶ Policy work with Governance



We want you!

RSECon26 Conference Committee - m.simpson@society-rse.org

Society Working Groups:

- **Communications and Publicity** - comms@society-rse.org
- **EDIA / Role Diversity** - edia@society-rse.org
- **Web** - new for 2025! - web@society-rse.org

Special Interest Groups (sig-coordinator@society-rse.org):

- Regional RSE Groups SIG
- Reasonable Performance Computing SIG
- HPC RSE SIG
- Green RSE
- Teaching and Training
- Geoscience
- Fortran Specialist Group
- RSE Leaders Network SIG

Come and talk to us at the Society booth
or contact us at info@society-rse.org or
society-rse.org/community/get-involved



We want you!

Drop your details here if you're interested, but don't know in what...

Contribute new ideas, such as:

Outreach and Advocacy?

Mental health?

Organisational
membership?

Accreditation?

Online seminar series?



We can provide resources and funding to help!

Come and talk to us at the Society booth
or contact us at info@society-rse.org or
society-rse.org/community/get-involved



Special Interest Groups

Gillian Sinclair

Special Interest Groups

- ▶ RSE Leaders Network
- ▶ Green RSE SIG
- ▶ Reasonable Performance Computing
- ▶ Teaching and Training
- ▶ High Performance Computing RSE
- ▶ Geoscience
- ▶ Fortran Special Group
- ▶ Regional RSE groups

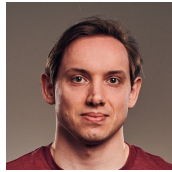
<https://society-rse.org/community/special-interest-groups/>

Regional RSE groups

Set up or in-progress

- ▶ Research Software London
- ▶ N8 CIR RSE Community
- ▶ Community of Edinburgh Research Software Engineers
- ▶ Supercomputing Wales
- ▶ RSE Midlands
- ▶ RSE South
- ▶ Northern England RSEs
- ▶ Research Software Engineering East of England
- ▶ ScotRSE

<https://society-rse.org/community/regional-groups/>



Equality, Diversity, Inclusion and Accessibility (EDIA) & Role Diversity

Stef Piatek

EDIA & Role Diversity

- ▶ Mix of members from community and trustees
- ▶ Public Slack channel, minutes and GitHub board
#edia-and-role-diversity-wg
- ▶ Community support in publishing RSEStories
- ▶ Worked with SSI to create flyer for college students on RSE & dRPT career path



Conference & Events

Twin Karmakharm
& Samantha Ahern

Conferences



- ▷ 420 in-person & 74 online attendees
- ▷ Introduced the Emerging Voice Plenary & Community Discovery Day
- ▷ 15 bursaries awarded
- ▷ Huge thanks to the conference committee!



- ▷ 434 in-person & 53 online attendees
- ▷ 5 full tracks of 36 Talks, 11 Walkthroughs, 9 Workshops and 6 BoFs
- ▷ Introduced new meet & greet events
- ▷ 25 bursaries awarded and an introduction of bursary for 'hidden costs'

Events

8 of 19 events funded (up from 7 of 10 last year)

- ▶ Pre-seeds Program: Research 101
- ▶ Opening the black box - how Code of Conduct enforcement works "under the hood" at The Carpentries
- ▶ RSE Midlands 2025
- ▶ Open Science for Bioinformaticians
- ▶ WHPC Cambridge & East Anglia, and RSE East England Kick-off event
- ▶ Digital Humanities and RSE Summer School 2025
- ▶ Neuroinformatics Unit Open Software Week
- ▶ Research Software Asia Australia 2025 Conference

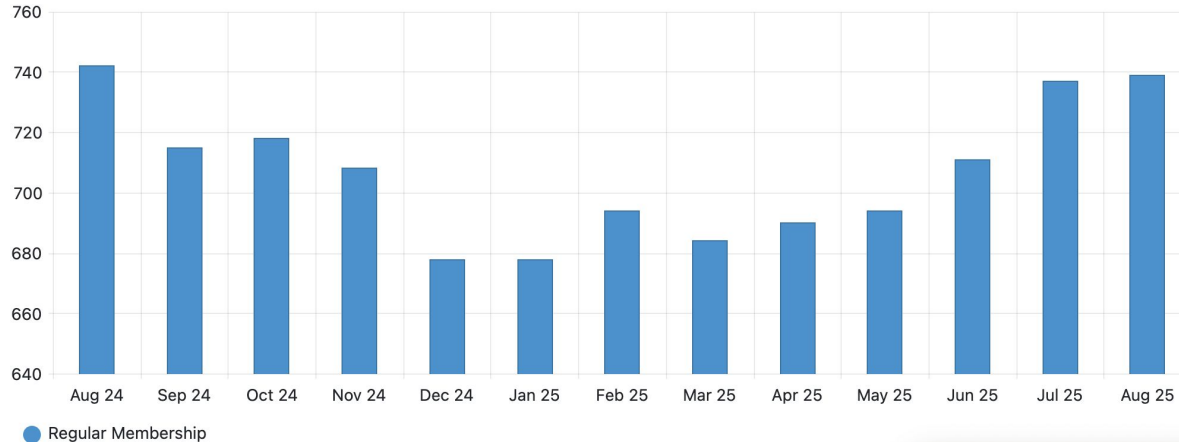


Membership

Samantha Ahern

Membership

- ▶ Reduced duplicate memberships
- ▶ Membership fee still £20
- ▶ > 6,900 members in our slack instance
- ▶ Over 700 paid members





Comms

Mike Simpson

Communications

Buffer

- Mastodon, Bluesky, LinkedIn
- Queue Posts
- Reduce workload



Improvements to the Newsletter

Regular promotions - Newsletter, Events & Initiatives Fund

Communications

- ▶ Mastodon 551 (+144)
- ▶ LinkedIn Page: 905 (+447)
- ▶ LinkedIn Group: 338 people
- ▶ Bluesky: 237 (+237)
- ▶ Mailing List: 1,755 (+217)
- ▶ Slack: 6,891 (+993)
- ▶ YouTube: 423
- ▶ Twitter: 6,887 (-325)

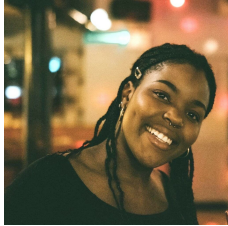


Communications

Get involved!

- **Working Group**
- open to non-trustees

comms@society-rse.org



Mentoring scheme

Stef Piatek

Mentoring scheme

- Increased our cohort to 37 pairs (29 last year)
- Run by CoachMentoring
 - Pairing
 - Training & workshops
 - Collation of feedback
- Please grab a sticker if you've been in any cohort





Finance & Treasurer's Report

Martin O'Reilly

Treasurer's Report

- ▶ Income comes mostly from:
 - ▷ Conference sponsorship (46%)
 - ▷ Conference ticket sales (48%)
 - ▷ Membership fees (6%)
- ▶ Expenses are mostly for:
 - ▷ Conference (84%)
 - ▷ Community grants (4.4% / 28%)
 - ▷ Mentorship scheme (3.8% / 24%)
 - ▷ Community infrastructure (3.3% / 21%)
 - ▷ Administration (4.3% / 27%)
- ▶ Effective cash balance ~£129,562 due to:
 - ▷ +£17,238 net outstanding income for 2024-25
 - ▷ -£137,815 net advance income for 2025-26
 - ▷ -£23,160 VAT collected but not paid to HMRC

Income	2024-25	2023-24	2022-23	Average
Donations	£ 1,120	£ -	£ 1,018	£ 428
RSECon ticket sales	£103,774	£ 74,210	£ 86,640	£ 52,925
RSECon sponsorship	£107,500	£ 31,000	£ 45,500	£ 36,800
Memberships	£ 13,480	£ 14,780	£ 13,540	£ 8,360
Other	£ 48	£ 65	£ 61	£ 35
Total	£225,921	£120,055	£146,759	£ 123,184
Expenditure	2024-25	2023-24	2022-23	Average
Community grants	£ 8,727	£ 8,245	£ 7,390	£ 4,872
Community infrastructure	£ 6,461	£ 5,417	£ 3,952	£ 3,166
Mentoring scheme	£ 7,410	£ 3,375	£ 2,150	£ 2,587
RSECon	£165,093	£120,615	£ 95,733	£ 76,288
Administration	£ 8,446	£ 7,251	£ 5,733	£ 4,286
Total	£196,138	£144,903	£114,957	£ 113,999
Surplus / (Deficit)	2024-25	2023-24	2022-23	Average
Total	£ 29,784	£ (24,848)	£ 31,802	£ 9,185

Cash and money owed to Society	30 Jun 2025	30 Jun 2024
Income owed to Society	£ 25,286	£ 13,108
Advance expenditure for following year	£ 6,989	£ 27,626
Funds in bank	£ 273,440	£ 269,308
Total	£ 305,715	£ 310,042
Money owed by Society	30 Jun 2025	30 Jun 2024
Expenditure owed by Society	£ 8,048	£ 8,816
Advance income from following year	£ 144,804	£ 171,001
Grants awarded but not claimed	£ -	£ 4,045
VAT collected for HMRC but not paid	£ 23,160	£ 26,339
Other	£ 139	£ 62
Total	£ 176,012	£ 210,201
Effective available funds	30 Jun 2025	30 Jun 2024
Total	£ 129,703	£ 99,842

Treasurer's Report

- ▶ Conference surplus is main source of funds to support Society activity
- ▶ Average surplus is £23,000 but varies
 - ▷ RSECon23 made £15,000 loss
 - ▷ RSECon24 made a £47,000 surplus
 - ▷ RSECon25 is looking like it will generate a healthy surplus
- ▶ Sponsorship is about 50% of conference income and supports
 - ▷ Attendance bursaries
 - ▷ Hybrid streaming
 - ▷ Surplus to fund Society activity throughout the year

Income	RSECon24	RSECon23	RSECon22	Average
Donations	£ 1,120	£ -	£ 1,000	£ 707
Sponsorship	£ 107,500	£ 31,000	£ 45,500	£ 61,333
In-person ticket sales	£ 94,054	£ 70,623	£ 86,640	£ 83,772
Remote ticket sales	£ 9,720	£ 3,587	£ -	£ 4,436
Merchandise	£ 43	£ 65	£ 61	£ 56
Total	£ 212,437	£ 105,275	£ 133,201	£ 150,304
Expenditure	RSECon24	RSECon23	RSECon22	Average
Administration	£ 21,826	£ 13,063	£ 6,797	£ 13,895
Attendance bursaries	£ 6,270	£ 1,678	£ 8,847	£ 5,598
Catering	£ 61,965	£ 33,978	£ 28,799	£ 41,580
Promotion	£ 3,137	£ 1,708	£ 3,589	£ 2,811
Social and networking (catering)	£ 13,491	£ 16,515	£ 25,719	£ 18,575
Social and networking (entertainment)	£ -	£ 5,000	£ 3,167	£ 2,722
Social and networking (venue)	£ 420	£ 5,150	£ 1,775	£ 2,448
Speaker expenses	£ 629	£ 343	£ 2,699	£ 1,223
Speaker fees (professional)	£ 10,000	£ -	£ -	£ 3,333
Speaker honoraria (non-professional)	£ -	£ 828	£ -	£ 276
Streaming costs	£ 23,436	£ 21,830	£ -	£ 15,089
Transaction fees	£ 6,384	£ 5,304	£ 1,313	£ 4,334
Travel and accommodation	£ 3,427	£ 2,531	£ 1,620	£ 2,526
Event venue hire	£ 14,160	£ 12,687	£ 11,407	£ 12,752
Bank fees / currency gains)	£ 449	£ 107	£ 21	£ 192
Total	£ 165,592	£ 120,722	£ 95,754	£ 127,356
Surplus / (Deficit)	RSECon24	RSECon23	RSECon22	Average
Total	£ 46,844	£ (15,446)	£ 37,447	£ 22,948

Treasurer's Report

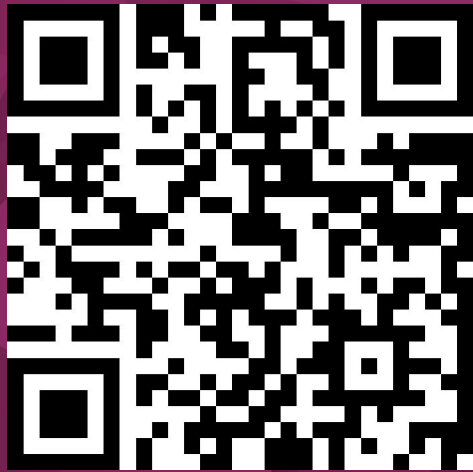
- ▶ Our financial position is healthy. We have accumulated a surplus over the last 5 years
- ▶ Accumulated surplus lets us plan more stable expenditure based on a rolling 3-year average
- ▶ Continue to target a sustainable surplus for our annual conference to support the community activity throughout the year
- ▶ Average net income of £37,000 to fund non-conference activity (£23,000 RSECon + £14,000 membership)
- ▶ Will be investing more of our surplus in support of community activities, including via our community grants scheme and regional and special interest groups
- ▶ If you have ideas for how the Society can best invest its surplus to support the community we want to hear from you!

Treasurer's Report

- ▶ Huge thank you to SSI, who provide very generous in-kind support of 50% of Lyndsey/Michael's time as Society Community Manager



Q&A



slido.com
#agm25

Draft ethical sponsorship policy

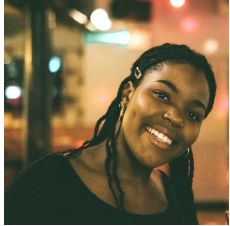
- Sponsorship is crucial
- We want to represent our membership
- Avoidance criteria: core business function
- Applies to > £100
 - Except volunteering time
- Members vote to change avoidance criteria
- If unclear, trustee vote or membership vote



Draft ethical sponsorship areas

- Chat to us at the SocRSE stall
- Members form: avoidance areas
- Trustees collate and confirm
- Members form: reasons against areas
- Members vote on avoidance areas





Trustee Elections

Mike Simpson

Election Process

- We can have up to 14 trustees
 - We had 14 trustees after the AGM in '24
 - 2 stood down earlier in the year
 - 2 were temporarily appointed
- $\frac{1}{3}$ must stand down at the AGM each year
 - 9 are standing down today
 - 10 new trustees have been nominated



Voting process

- ▶ 9 available Trustee slots
- ▶ 10 candidates stood for election
- ▶ Elections ran from 28 July to 22 August

- ▶ Scrutineers:
Jonathan Cooper and Simon Hettrick

Candidates

- Iain Barrass *University of Glasgow*
- William Haese-Hill *University of Glasgow*
- Elena Breitmoser *EPCC/University of Edinburgh*
- James Tyrrell *University of Birmingham*
- Martin O'Reilly *The Alan Turing Institute*
- Ryan Field *University of Glasgow*
- Gillian Sinclair *University of Manchester*
- Mark Basham *Rosalind Franklin Institute*
- Adrian Mircea Nenu *Google/The University of Manchester*
- David Beavan *The Alan Turing Institute*

Technicalities

- ▶ Single Transferable Vote
 - ▷ Modified Droop quota: $\text{valid votes} / (\text{seats} + 1)$
 - ▷ Fractional transfer of surplus votes
- ▶ Implemented in Python using pyrankvote
 - ▷ Same code as 2023 election
- ▶ 99 votes, all valid => quota = 9.9
- ▶ 4 rounds of STV required

Sanity checking

- ▶ Checking results in Google Forms confirms the number of votes received
- ▶ Distributions of preferences for each candidate are consistent with the outcome
- ▶ It was a very close call between 9th and 10th!

Trustees Elected

- Iain Barrass *University of Glasgow*
- William Haese-Hill *University of Glasgow*
- Elena Breitmoser *EPCC/University of Edinburgh*
- James Tyrrell *University of Birmingham*
- Martin O'Reilly *The Alan Turing Institute*
- Gillian Sinclair *University of Manchester*
- Mark Basham *Rosalind Franklin Institute*
- Adrian Mircea Nenu *Google/The University of Manchester*
- David Beavan *The Alan Turing Institute*

Conclusion & Close

David Beavan

**Thank you to
the conference
committee!**

**Thank you to
the trustees!**

**Thank you to you,
our members!**